

D5

TRACK-TYPE TRACTOR



Net Power (1,770 rpm)

ISO 9249/SAE J1349

127 kW (170 hp)

ISO 9249/SAE J1349 (DIN)

(172 hp)

Operating Weight Ranges

VPAT

17 180-19 170 kg (37,875-42,263 lb)

Push Arm

17 340 kg (38,228 lb)

Cat® C7.1 Engine meets U.S. EPA Tier 4 Final/EU Stage V/Japan 2014 (Tier 4 Final)/Korea Tier 4 Final emission standards.



The new **Cat® D5** succeeds the renowned D6N with superior performance and the broadest choice of technology features to help you get the most from your dozer. Nimble and responsive, it has power for dozing and finesse for grading. Fully automatic transmission gives you seamless acceleration, so you can get the job done quickly.

THE NEW CAT® D5

PERFORMANCE AND
TECHNOLOGY



D5 127 kW/170 hp 19 170 kg/42,263 lb

D6N 124 kW/166 hp 18 346 kg/40,446 lb

NEW NAMES, SAME WORLD-CLASS PERFORMANCE

The update from D6N to D5 is part of an effort to make all Cat dozer model names simpler. Over the next couple of years, the Cat dozer range will be renamed from smallest to largest – D1 to D11 – with one model per size class and no more letter modifiers like “N,” “K,” “T.”

While the number may be different, the D5 gives you all the advantages of the D6N and so much more. The D5 delivers more weight and horsepower, more technology and more performance, helping you make the most of your equipment investment.



BEST-IN-CLASS PERFORMANCE

Nimble, responsive and maneuverable with a fully automatic transmission for seamless acceleration, fast cycle times and long-term durability. New cab sets the standard for visibility, comfort, productivity.

UP TO 50% MORE PRODUCTIVITY WITH CAT TECHNOLOGY

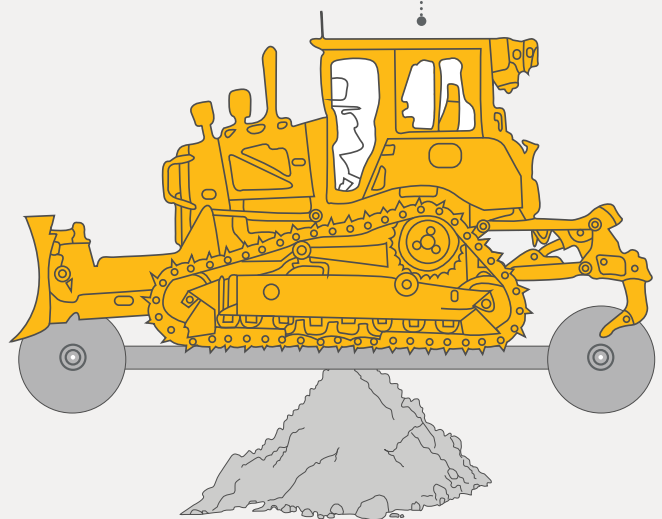
More technology choices to help operators work better, faster and safer. Updated GRADE with 3D and Slope Assist™ help achieve the best quality results, while helpful new technologies make machine operation easier and more efficient.

MORE POWER TO WORK

Goes beyond D6N with more power and added performance to get the job done. Stronger structures offer more durability and uptime, while a new purpose-built push arm dozer helps you take on heavier work.

BALANCED WORKLOAD

MAXIMIZE YOUR EQUIPMENT INVESTMENT WITH ONE MACHINE **BALANCED FOR DOZING AND GRADING**





SPREAD MORE, GRADE MORE POWER TO PUSH YOU FORWARD



BIGGER, STRONGER

Ideally balanced for both dozing and grading, the D5 delivers more weight and horsepower for even more power and versatility. Take on even bigger tasks with new purpose-built push arm configuration.



FULLY AUTOMATIC

Experience powershift durability with the seamless acceleration of a fully automatic 3-speed transmission. Just set your desired ground speed and the dozer adjusts for maximum fuel efficiency and power to the ground.



BEST-IN-CLASS GRADING

Balanced, nimble and fast, the D5 gives you agility and ideal machine balance so you can achieve high quality grades quickly. A variety of technology features help you grade better and faster, with less operator input.



TURN TIGHTER

Improved steering performance gives you a tighter turning radius and quicker cycle times, so you can work faster and steer around obstacles on the job site with ease.

The broadest range of factory-integrated GRADE technologies and built-in features help operators of varied experience levels make the most of every shift.

TOP RESULTS, LESS EFFORT

- + FINISH JOBS FASTER
- + REDUCE REWORK
- + IMPROVE YOUR PROFITS

CAT® TECHNOLOGY IS LIKE HAVING A COACH IN THE CAB

PLAY YOUR BEST

Optimal efficiency, fewer operator inputs



KNOW THE SCORE

Real-time Feedback

NO FOUL

Save rework, time, materials

OUTPACE THE COMPETITION

WORK SMARTER. WORK SAFER.



CAT GRADE TECHNOLOGY

BOOST YOUR PRODUCTIVITY

NO GPS SIGNAL? NO PROBLEM

Cat GRADE with Slope Assist automatically maintains blade position without a GPS signal. Put it to work building pads, creating simple design plans on-the-go, or working where GPS is unavailable.

FIRST PASS TO FINISH GRADE

Cat GRADE with 3D has been updated to give you even more speed and accuracy without position sensing cylinders. The factory-integrated system has a new, friendly 10-inch (254 mm) touchscreen that works like a smart phone, so it is easy for operators to pick up quickly. Smaller antennas are integrated into the cab roof for even better protection. AutoCarry™ is included to automate blade lift for more consistent blade loads and less track slip.

READY WHEN YOU ARE

With Attachment Ready Option (ARO), your dozer comes from the factory ready for simple installation of an aftermarket grade control system. You will also find a mounting location and connections in the cab to make it easier to utilize your technology systems.



STABLE BLADE

Stable Blade has been improved to make it even easier to get smoother surfaces faster when grading manually. Works seamlessly with operator blade inputs to help reduce imperfections and produce a smoother surface.

BLADE LOAD MONITOR

Get real-time feedback on current load versus the optimal blade load based on your ground conditions. Actively monitors machine load and track slip to help you reach optimal pushing capacity.

TRACTION CONTROL

Save time, effort, fuel and track wear. If high track slip is detected, Traction Control temporarily reduces track power so the operator can adjust blade load and limit the track slip.

Note: Blade Load Monitor and Traction Control packaged with Cat GRADE with 3D. Requires additional GPS sensor.



MAKE THE MOST OF
EVERY. SINGLE. PASS.

ENHANCED POWER TRAIN CONTROL

TOUGH OUTSIDE

SMART INSIDE

Steering and slope work just got easier. Advanced controls automatically manage the power train and brakes to help operators experience better steering control and to maneuver more easily on slopes. No extra operator inputs to think about – the built-in features just work in the background.



HELP ON HILLS

Hill Descent Control maintains preselected machine speed, without using the service brakes, for added control when working downhill. **Hill Hold** automatically engages the brakes to hold position when in neutral on a slope.

PRECISE CONTROL

Use the **Decel Brake Pedal** to control machine speed all the way to a complete stop, or for smooth inching control.

PINPOINT TURNING

Turn tighter when spreading dirt or working in narrow spaces. **Steering Radius Control** uses steering and decel pedal input to automatically downshift for a tighter turning radius and more maneuverability.



UNPRECEDENTED EASE OF OPERATION

No need to worry about shifting gears to get the most from the machine – just choose your ground speed and go. The dozer automatically optimizes based on load for greatest productivity and fuel efficiency.

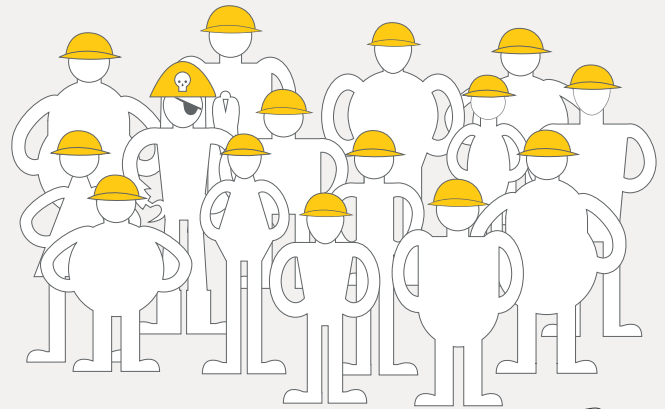
WORK SPACE

Step in to a spacious cab that resets the industry standard for comfort and visibility. A wider air-suspension seat gives you plenty of adjustments, so you can find just the right position. Enjoy more storage space, along with updated heating/cooling to help keep you more comfortable and reduce window fogging/frosting too.

OPERATOR FRIENDLY DISPLAY

New 10-inch (254 mm) touchscreen is easy to use, with a great view of machine settings, rearview camera and Slope Indicate/ Slope Assist screens. Key Features button gives you an overview of machine features, along with some helpful operating tips.

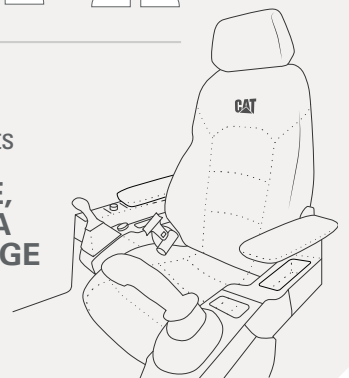
A CAB EVERY BODY CAN LOVE



13 Seat Adjustments*

4 Arm Rest Adjustments

**PLUS MORE SPACE,
MORE GLASS AREA
AND MORE STORAGE**
add up to customized
for all-day productivity



* Premium seat

SEE YOUR WAY TO MORE PRODUCTIVITY

More visibility around the dozer means you can work with more confidence and precision. Easy machine access saves time and helps make the job site safer.



BETTER VIEW

Redesigned cab with integrated Rollover Protective Structure (ROPS) has about 15% more glass area to give you better all-around visibility. A steeper hood angle gives you 30% better forward visibility to the blade and work site.



EXTRA EYES

A High Definition rearview camera is standard. It shows prominently in the main display and includes back-up lines to help guide you.



EASY ACCESS

Standard rear ladder puts fueling, filter changes and rear window cleaning in easy reach. Ground-level access to optional fast fuel fill and maintenance points. Grab rail on both sides of cab roof and tie offs add to your safety.

LESS MAINTENANCE TIME

LOWER MAINTENANCE COST



GET BACK TO WORK

Grouped service points, modular component design and easy access to routine maintenance points save you time every day. If needed, the cab can be removed in about 30 minutes, compared to 4 hours on previous models.

SPEND LESS

Heavier, more robust machine helps increase uptime and reduce overall operating cost. Extended filter life and longer life LED lights help save you time and money. Optional reversible fan helps remove debris while you work, saving cleanout and maintenance time.

GAIN DURABILITY

Hydraulic and electrical lines running to the blade are guarded for better protection. More robust track roller frame gives you added durability to take on heavier work, and new Heavy Duty Extended Life undercarriage – HDXL DuraLink™ – offers up to 20% more seal life in high impact conditions.

All comparisons to previous model D6N.

CAT LINK TECHNOLOGY

TAKES THE GUESSWORK OUT OF MANAGING YOUR EQUIPMENT

CAT LINK telematics technology helps take the complexity out of managing your job sites – by gathering data generated by your equipment, materials, and people – and serving it up to you in customizable formats.

CAT PRODUCT LINK™

Product Link™ collects data automatically and accurately from your assets – any type and any brand. Information such as location, hours, fuel usage, productivity, idle time, maintenance alerts, diagnostic codes, and machine health can be viewed online through web and mobile applications.



VISIONLINK®

Access information anytime, anywhere with VisionLink® – and use it to make informed decisions that boost productivity, lower costs, simplify maintenance, and improve safety and security on your job site. With different subscription level options, your Cat dealer can help you configure exactly what you need to connect your fleet and manage your business, without paying for extras you don't want. Subscriptions are available with cellular or satellite reporting or both.



REMOTE SERVICES

The Cat App helps you manage your assets – at any time – right from your smartphone. See fleet location and hours, get critical required maintenance alerts, and even request service from your local Cat dealer.

- + **Remote Flash** – get software updates to one or more machines remotely. You just need a designated person close to the machine to initiate/confirm the update.
- + **Remote Grade** lets you wirelessly manage site plans via Trimble Connect Services.
- + **Operator ID** lets you track machine operation by individual operator using the main display and Product Link.





EQUIPPED FOR THE JOB

MAXIMIZE YOUR VERSATILITY

PRODUCTIVITY OUT FRONT

Pick a new purpose-built push arm bulldozer with plenty of dirt moving power or a 6-way VPAT blade to maximize your versatility and grading performance.

ON TRACK FOR BETTER PERFORMANCE

Choose from standard or Low Ground Pressure (LGP) configurations. Common structures for Heavy Duty and SystemOne™ undercarriage allow you to change from one undercarriage type to the other.

TOUGHER TRACTORS

Waste Handler, Forestry and Fire Fighting arrangements are purpose-built for optimal performance. Factory guarding, seals and cab features help protect your machine and operator in especially harsh conditions.

TECHNICAL SPECIFICATIONS

See cat.com for complete specifications.

ENGINE	
Engine Model	Cat C7.1
Emissions	U.S. EPA Tier 4 Final/EU Stage V/ Japan 2014 (Tier 4 Final)/ Korea Tier 4 Final
Build Number	17A
Power Train	Fully Automatic 3-Speed
Net Power – 1,770 rpm	
ISO 9249/SAE J1349	127 kW 170 hp
ISO 9249/SAE J1349 (DIN)	172 hp
Displacement	7.1 L 433 in ³
All non-road Tier 4 Interim and Final, Stage IIIB, IV and V, Japan 2014 (Tier 4 Final) and Korea Tier 4 Final diesel engines are required to use only Ultra Low Sulfur Diesel (ULSD) fuels containing 15 ppm EPA/10 ppm EU (mg/kg) sulfur or less. Biodiesel blends up to B20 (20% blend by volume) are acceptable when blended with 15 ppm (mg/kg) sulfur or less ULSD. B20 should meet ASTM D7467 specification (biodiesel blend stock should meet Cat biodiesel spec, ASTM D6751 or EN 14214). Cat DEO-ULS™ or oils that meet the Cat ECF-3, API CJ-4, and ACEA E9 specification are required. Consult your OMM for further machine specific fuel recommendations.	
Diesel Exhaust Fluid (DEF) used in Cat Selective Catalytic Reduction (SCR) systems must meet the requirements outlined in the International Organization for Standardization (ISO) standard 22241.	
The air conditioning system on this machine contains the fluorinated greenhouse gas refrigerant R134a (Global Warming Potential = 1430). The system contains 1.36 kg of refrigerant which has a CO ₂ equivalent of 1.946 metric tonnes.	

SERVICE REFILL CAPACITIES		
Fuel Tank	315 L	83.2 gal
DEF Tank	16 L	4.2 gal

	OPERATING WEIGHT	GROUND PRESSURE*
VPAT	17 180 kg 37,875 lb	47.6 kPa 6.9 psi
LGP VPAT	19 170 kg 42,263 lb	32.6 kPa 4.7 psi
VPAT Fine Grading	17 780 kg 39,198 lb	41.4 kPa 6.0 psi
LGP Folding VPAT	19 440 kg 42,858 lb	32.9 kPa 4.8 psi
SU	17 340 kg 38,228 lb	48.2 kPa 7.0 psi
For machine with ripper, add 1290 kg/2,844 lb.		
*With SU blade, LGP with VPAT blade and no rear attachments unless otherwise specified and calculated per ISO 16754.		

BLADES	CAPACITY	WIDTH
VPAT	3.5 m ³ 4.6 yd ³	3272 mm 10.7 ft
LGP VPAT	4.0 m ³ 5.2 yd ³	4080 mm 13.4 ft
LGP VPAT Foldable	4.2 m ³ 5.5 yd ³	4080 mm 13.4 ft
SU	4.3 m ³ 5.6 yd ³	3164 mm 10.4 ft
SU – Narrow*	— —	3122 mm 10.2 ft
*Europe Only. Width with end bits removed.		

DIMENSIONS*	VPAT	LGP VPAT	VPAT FINE GRADING	SU
Track Gauge	1890 mm (74.4 in)	2160 mm (85.0 in)	1890 mm (74.4 in)	1890 mm (74.4 in)
Width of Standard Shoe	610 mm (24 in)	840 mm (33 in)	610 mm (24 in)	610 mm (24 in)
Width of Tractor	2500 mm (98.4 in)	3000 mm (118.1 in)	2500 mm (98.4 in)	2500 mm (98.4 in)
Machine Height (to ROPS)	3085 mm (121.5 in)	3200 mm (126.0 in)	3200 mm (126.0 in)	3085 mm (121.5 in)
Length of Track on Ground	2562 mm (100.9 in)	3116 mm (122.7 in)	3116 mm (122.7 in)	2562 mm (100.9 in)
Length of Basic Tractor	3680 mm (144.9 in)	4151 mm (163.4 in)	4151 mm (163.4 in)	3680 mm (144.9 in)
With the Following Attachments, Add to Basic Tractor Length				
VPAT Blade, Straight	1336 mm (52.6 in)	1230 mm (48.4 in)	1230 mm (48.4 in)	—
VPAT Blade, Angled 25°	1982 mm (78.0 in)	2049 mm (80.7 in)	1876 mm (73.9 in)	—
VPAT Blade Foldable, Angled 31°	2110 mm (83.1 in)	2214 mm (87.1 in)	2005 mm (78.9 in)	—
SU Blade	—	—	—	1423 mm (56.0 in)
Ripper	1044 mm (41.1 in)	1044 mm (41.1 in)	1044 mm (41.1 in)	1044 mm (41.1 in)
*SystemOne Undercarriage.				

Configurations and features may vary by region. Please consult your Cat dealer for availability in your area.

STANDARD & OPTIONAL EQUIPMENT

Standard and optional equipment may vary. Consult your Cat dealer for details.

POWER TRAIN	STANDARD	OPTIONAL
Cat C7.1 diesel engine	•	
Fully-automatic 3-speed transmission	•	
Infinite ground speed adjustment	•	
OPERATOR ENVIRONMENT	STANDARD	OPTIONAL
Fully redesigned cab, sound suppressed, with Integrated Roll Over Protective Structure (IROPS)	•	
Full-color 10-inch (254 mm) touchscreen display	•	
Integrated rearview camera	•	
Comfort cab with fixed armrests	•	
Premium cab with adjustable armrests		•
Cab mounted modular HVAC system	•	
Added storage areas	•	
Electrohydraulic implement and steering controls	•	
Cloth seat	•	
Deluxe leather heated/ventilated seat		•
Communication radio ready	•	
Lights – 6 LED	•	
Premium lights – 12 LED		•
Integrated warning lights		•
Application Profile	•	
Operator ID/Operator ID with Security	•	
CAT TECHNOLOGY	STANDARD	OPTIONAL
Slope Indicate	•	
ARO with Slope Assist		•
Updated Cat GRADE with 3D		•
Full-color 10-inch (254 mm) touchscreen grade display		•
AutoCarry		•
Updated Stable Blade (included in ARO with Assist)		•
Traction Control		•
Blade Load Monitor		•
Product Link, Cellular PLE742, PLE743	•	
Product Link Elite PLE783 – Dual Cellular/Satellite		•
BLADES	STANDARD	OPTIONAL
VPAT	•	
Semi-Universal	•	
Foldable VPAT		•
Waste/Landfill		•
<i>For a full list of blade offerings, please refer to the D5 Technical Specifications brochure on cat.com.</i>		

UNDERCARRIAGE	STANDARD	OPTIONAL
Heavy Duty (HDXL with DuraLink) or SystemOne	•	
Redesigned track roller frame	•	
Moderate Service or Extreme Service track shoes	•	
<i>For a complete listing of track shoe offerings, please refer to the D5 Technical Specifications brochure on cat.com.</i>		
SERVICE AND MAINTENANCE	STANDARD	OPTIONAL
30-minute cab removal	•	
Ecology drains	•	
Fast fuel fill ready		•
Fast fuel pump		•
Refilling fuel pump (EU only)		•
Ground level service center	•	
High-speed oil change		•
Hydraulic fan	•	
Hydraulic reversing fan		•
Rear access ladder	•	
Remote Flash/Remote Troubleshoot		•
Shovel holder	•	
Underhood work light		•
HYDRAULICS	STANDARD	OPTIONAL
Independent steering and implement pumps	•	
Load sensing hydraulics	•	
ATTACHMENTS	STANDARD	OPTIONAL
Ripper-ready rear hydraulics		•
Ripper with straight or curved shanks		•
Winch		•
Drawbar	•	
Side screens		•
Rear screen – hinged or fixed		•
Sweeps		•
Fine Grading arrangement		•
Forestry and Waste special arrangements		•
Fire Dozer configuration		•

Not all features are available in all regions. Please check with your local Cat dealer for specific offering availability in your area.

For additional information, refer to the Technical Specifications brochure available at www.cat.com or your Cat dealer.

For more complete information on Cat products, dealer services and industry solutions, visit us on the web at www.cat.com

© 2019 Caterpillar. All Rights Reserved.

VisionLink is a trademark of Trimble Navigation Limited, registered in the United States and in other countries.

Materials and specifications are subject to change without notice. Featured machines in photos may include additional equipment. See your Cat dealer for available options.

CAT, CATERPILLAR, LET'S DO THE WORK, their respective logos, "Caterpillar Yellow," the "Power Edge" and Cat "Modern Hex" trade dress as well as corporate and product identity used herein, are trademarks of Caterpillar and may not be used without permission.
www.cat.com www.caterpillar.com

AEXQ2532-01
Replaces AEXQ2532
Build Number: 17A
(North America, Europe,
ANZ, Turkey, Korea)





„Елтрак България“ ЕООД

бул. Европа 439
София 1331
тел. 02 / 818 30 00
факс 02 / 808 30 50

Главен път Сарафово-Бургас 232км
Бургас 8000
тел. 056 / 80 68 51
факс 056 / 80 68 56

бул. Цар Освободител 254
Варна 9027
тел. 052 / 57 44 00
факс 052 / 57 44 07

бул. „Новозагорско шосе“ 2-ри километър
Стара Загора 6000
тел. 042 / 28 00 80
факс 042 / 28 00 82

<http://www.eltrakbulgaria.com/>

ISO 9001:2015 Certified

До	„АЕЦ Козлодуй“ ЕАД
На вниманието на	г-н Станислав Димитров

О Ф Е Р Т А №023089/13.11.2023 г.

Вериген булдозер CATERPILLAR, модел D5 SU

работно тегло – 18 733 kg
двигател Cat C7.1 ACERT – 148 kW

Стандартното оборудване на машината включва:

Електрооборудване - 24 V

LED работни светлини
Звуков сигнал при движение на заден ход
105 А алтернатор безчетков
Акумулатори 2 бр. 950CCA
Конвертор 12V / 10 А
Клаксон
Стартер 24V
Порт за диагностика
Сервизен център с достъп от нивото на земята

включващ: ключ маса, моточасовник и дистанционно включване на светлините

Работно място на оператора

Кабина, предпазваща оператора при преобръщане на машината (ROPS) или от падащи предмети (FOPS)
Климатизация и вентилация на кабината с автоматичен контрол на температурата
Електрохидравлични джойстици за работния инструмент и управление на машината
Седалка на въздушно окачване, абсорбираща сътресенията, самонавиващ се предпазен колан
Подлакътници с регулиране на височината
Степенки на таблото за работа при стръмни наклони
Инструментален панел с цветен 10" „touchscreen“ дисплей
Чистачки с интервали
Радиоподготовка
Отделение за вещи, стойка за чаша, закачалка за дрехи
Огледало за обратно виждане

Силово предаване

Дизелов двигател CAT C7.1 с електронно управление на впръскването на горивото Common rail и турбо-компресор
Покрива нивата на вредни емисии Етап V
Системи за третиране на изгорелите газове DPF и SCR
Електронен индикатор за запушен въздушен филтър на двигателя
Електронен индикатор за вода в горивото
Вентилатор с вискосъединител
Многостепенно филтриране на въздуха със система за отвеждане на праха
Електрическа помпа за обезвъздушаване на горивната система
Планетна предавателна кутия с хидротрансформатор (3 предни и 3 задни предавки)
Система EAS предоставяща 6 отделни режима за движение с електронно управление на двигателя и трансмисията
Контролирано превключване на предавките с автоматична компенсация на натоварването
Автоматично превключване на по-ниска предавка или задържане на определена предавка за по-голяма теглителна сила
Програмируемо превключване на предавките в двете посоки на движение
Управление на машината чрез диференциала
Автоматично изключване на двигателя след определено време работа на празен ход
Автоматично управление на оборотите на двигателя
Ходова част
Уплътнени и гресирани ленивци и ролки
Носещи ролки

„Елтрак България“ ЕООД

бул. Европа 439
София 1331
тел. 02 / 818 30 00
факс 02 / 808 30 50Главен път Сарафово-Бургас 232км
Бургас 8000
тел. 056 / 80 68 51
факс 056 / 80 68 56бул. Цар Освободител 254
Варна 9027
тел. 052 / 57 44 00
факс 052 / 57 44 07бул. „Новозагорско шосе“ 2-ри километър
Стара Загора 6000
тел. 042 / 28 00 80
факс 042 / 28 00 82<http://www.eltrakbulgaria.com/>

ISO 9001:2015 Certified

Верига с 40 звена
 Хидравлично натягане на веригите
Друго стандартно оборудване
 Защита на картера
 Екологично източване на течностите на машината
 Перфорирани капаци на мотора заключваеми

Портове за вземане на проби от маслата и охладителната течност
 Шарнирно окачена защита за радиатора
 Фиксирани водещи рамена
 Индикация за наклона върху който е разположена машината.

ДОПЪЛНИТЕЛНО ОБОРУДВАНЕ:

575-7734	Ходова част тип HDXL и ходови плочи с широчина 560 мм
575-5508	LED работни светлини 6 бр.
577-8623	Камера за движение на заден ход
579-5680	Булдозерно гребло SU с ширина 3164 мм и обем 4.3 м ³
577-7697	Product Link позволяваща дистанционно наблюдение на важните работни параметри на машината

Цена Франко склад Елтрак България ЕООД, София, без ДДС	558,340.00 лева
---	------------------------

Специална цена за „АЕЦ Козлодуй“ ЕАД Франко склад София, без ДДС	539,000.00 лева
---	------------------------

Опция невяключена в цената

591-8849 Лебедка PA55.....82,780.00 лева, без ДДС

<u>Гаранционен срок:</u>	12 месеца без ограничение в часовете - за определения период техническото обслужване се извършва от сервиза на Елтрак България ЕООД срещу допълнително заплащане
<u>Начин на плащане:</u>	по договаряне
<u>Текущ срок на доставка:</u>	5-6 месеца от плащане на аванс
<u>Валидност на офертата:</u>	1 (един) месец или до изчерпване на количеството

С У В А Ж Е Н И Е :

Станимир Станев
 /Търговски директор/



D5

Track-Type Tractor

Technical Specifications

Engine

Engine Model	Cat® C7.1	
Emissions	U.S. EPA Tier 4 Final/ EU Stage V/ Japan 2014 (Tier 4 Final)/ Korea Tier 4 Final	
Build Number	17A	
Power Train	Fully automatic 3-speed	
Net Power @ 1,770 rpm		
ISO 9249/SAE J1349	127 kW	170 hp
ISO 9249/SAE J1349 (DIN)	172 hp	
Engine Power (Maximum) @ 1,600 rpm		
SAE J1995	151 kW	202 hp
ISO 14396	148 kW	198 hp
ISO 14396 (DIN)	201 hp	
Bore	105 mm	4.1 in
Stroke	135 mm	5.3 in
Displacement	7.1 L	433 in ³

- Net power advertised is the power available at the engine flywheel when the engine is equipped with a fan, air cleaner, clean emissions module and alternator.
- No derating required up to 3000 m (9,840 ft) altitude, beyond 3000 m (9,840 ft) automatic derating occurs.
- All non-road Tier 4 Interim and Final, Stage IIIB, IV and V, Japan 2014 (Tier 4 Final) and Korea Tier 4 Final diesel engines are required to use only ultra-low sulfur diesel (ULSD) fuels containing 15 ppm (mg/kg) sulfur or less. Biodiesel blends up to B20 (20% blend by volume) are acceptable when blended with 15 ppm (mg/kg) sulfur or less ULSD. B20 should meet ASTM D7467 specification (biodiesel blend stock should meet Cat biodiesel spec, ASTM D6751 or EN 14214). Cat DEO-ULS™ or oils that meet the Cat ECF-3, API CJ-4, and ACEA E9 specification are required. Consult your OMM for further machine specific fuel recommendations.
- Diesel Exhaust Fluid (DEF) used in Cat Selective Catalytic Reduction (SCR) systems must meet the requirements outlined in the International Organization for Standardization (ISO) standard 22241.

Air Conditioning System

The air conditioning system on this machine contains the fluorinated greenhouse gas refrigerant R134a (Global Warming Potential = 1430). The system contains 1.36 kg of refrigerant which has a CO₂ equivalent of 1.946 metric tonnes.

Fluid/Refill Capacities

Fuel Tank	315 L	83.2 gal
DEF Tank	16 L	4.2 gal
Cooling System	41 L	10.8 gal
Engine Crankcase	18 L	4.8 gal
Power Train	160 L	42.3 gal
Roller Frames Standard/LGP (each)	18/27 L	4.8/7.1 gal
Final Drives (each)	8 L	2.1 gal
Hydraulic System	80 L	21.1 gal

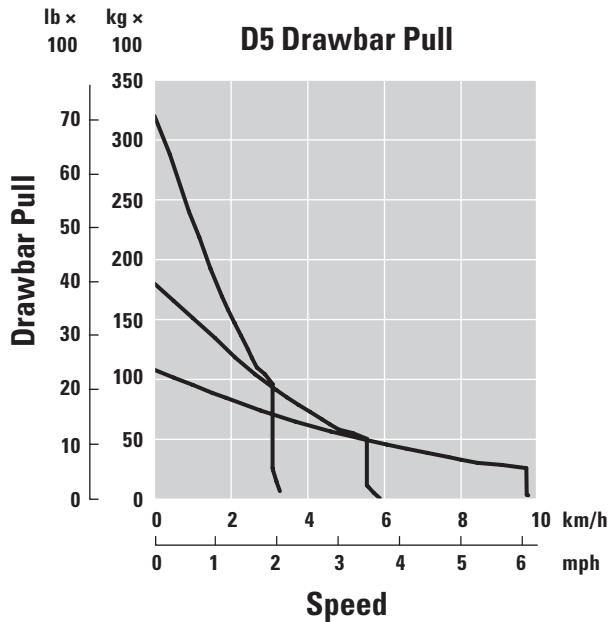
D5 Track-Type Tractor Specifications

Transmission

0.5 Forward	2.5 km/h (2.4 km/h)	1.6 mph (1.5 mph)
1.0 Forward	3.3 km/h (3.0 km/h)	2.1 mph (1.9 mph)
1.5 Forward	4.4 km/h	2.7 mph
2.0 Forward	5.8 km/h	3.6 mph
2.5 Forward	7.5 km/h	4.7 mph
3.0 Forward	9.8 km/h	6.1 mph
0.5 Reverse	3.1 km/h (2.9 km/h)	1.9 mph (1.8 mph)
1.0 Reverse	4.1 km/h (3.5 km/h)	2.5 mph (2.2 mph)
1.5 Reverse	5.4 km/h	3.4 mph
2.0 Reverse	7.1 km/h	4.4 mph
2.5 Reverse	9.5 km/h	5.9 mph
3.0 Reverse	12.2 km/h	7.6 mph
Maximum Drawbar Pull		
1.0 Forward	320 kN	71,939 lbf
2.0 Forward	198 kN	44,512 lbf
3.0 Forward	113 kN	25,403 lbf

NOTE: Data between brackets are values for EU.

Drawbar Pull



Hydraulic Controls – Pressures

Maximum Implement Operating Pressure	25 000 kPa	3,626 psi
Maximum Steering Operating Pressure	45 000 kPa	6,527 psi

Hydraulic Controls – Pump

Pump Output		
Implement	127 L/min	33.5 gal/min
Steering	165 L/min	43.5 gal/min
Fan	49 L/min	12.9 gal/min
Lift Cylinder Flow	127 L/min	33.5 gal/min
Tilt Cylinder Flow	127 L/min	33.5 gal/min
Ripper Cylinder Flow	127 L/min	33.5 gal/min
Angle Cylinder Flow – VPAT	127 L/min	33.5 gal/min

D5 Track-Type Tractor Specifications

D5 VPAT

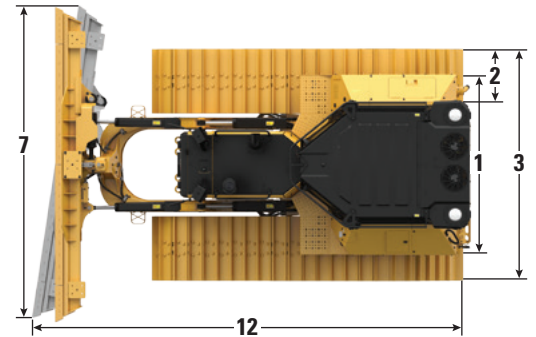
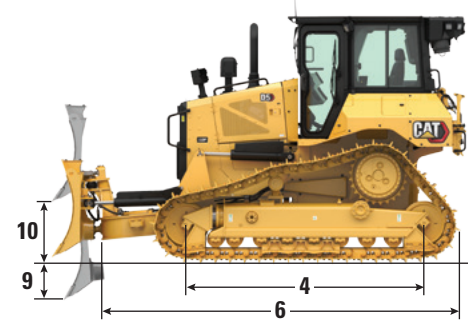
Operating Weight*	17 180 kg	37,875 lb
Shipping Weight**	16 950 kg	37,368 lb
Ground Pressure (ISO 16754)	47.6 kPa	6.9 psi
Undercarriage (Standard)	40 Section/ 7 Bottom Rollers	
1 Track Gauge	1890 mm	74.4 in
2 Width of Track Shoe (Standard)	610 mm	24 in
3 Width of Tractor	2500 mm	98.4 in
4 Length of Track on Ground	2562 mm	100.9 in
Ground Contact Area (ISO 16754)	3.5 m ²	5,469 in ²
Grouser Height (Moderate Service)	57 mm	2.2 in
Ground Clearance	358 mm	14.1 in
5 Machine Height***	3085 mm	121.5 in
6 Length of Basic Tractor	3680 mm	144.9 in

All dimensions above with SystemOne™ undercarriage with Extreme Service shoes of maximum width for configuration, VPAT blade, and calculated per ISO 16754 unless otherwise specified.

*Operating weight includes blade, lubricants, coolant, full fuel tank, ROPS/FOPS cab, drawbar, and 75 kg (165 lb) operator.

**Shipping weight includes blade lift cylinders, C-frame, lubricants, coolant, 10% fuel, ROPS/FOPS cab, and drawbar.

***Machine height from tip of grouser to top of Product Link™ Antenna. For sweeps, add 64 mm (2.5 in) to overall machine height. For forestry sweeps, add 81 mm (3.2 in). With Extreme Service, add 9 mm (0.4 in). When Cat GRADE with 3D antennas are installed there is no added machine height.



LGP VPAT Model Shown

Blades

Configuration	VPAT		VPAT – Foldable	
Capacity (ISO 9246)	3.5 m ³	4.6 yd ³	3.5 m ³	4.6 yd ³
7 Width across End Bits	3272 mm	10.7 ft	3272 mm	10.7 ft
Width without End Bits	3159 mm	10.4 ft	3159 mm	10.4 ft
Width across End Bits (Blade Angled 24°)	2998 mm	118.0 in	2558 mm	100.7 in
Width without End Bits (Blade Angled 24°)	2908 mm	114.5 in	2539 mm	97.0 in
Maximum Blade Angle	24°		24°	
8 Height	1261 mm	49.6 in	1261 mm	49.6 in
9 Dig Depth	559 mm	22.0 in	559 mm	22.0 in
10 Lift Height	971 mm	38.2 in	971 mm	38.2 in
11 Maximum Tilt at Blade Corner	257 mm	10.1 in	257 mm	10.1 in
Maximum Tilt Angle	8.5°		8.5°	
Pitch Adjustment	60° (cutting edge/ground, nominal); -2°/+4°		60° (cutting edge/ground, nominal); -2°/+4°	
12 Length of Machine (Blade Straight)	5000 mm	197 in	5016 mm	197 in
Length of Machine (Blade Angled 24°, without fuel tank guard)	5621 mm	221 in	5621 mm	221 in
Blade Weight	1090 kg	2,403 lb	1286 kg	2,835 lb

D5 Track-Type Tractor Specifications

D5 LGP VPAT

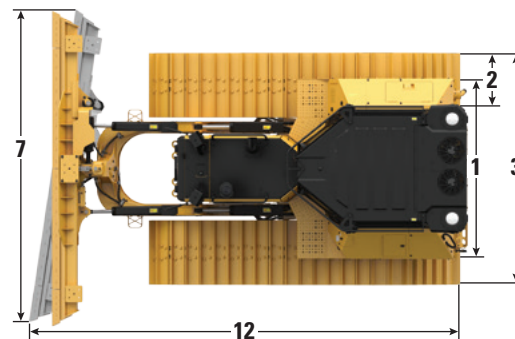
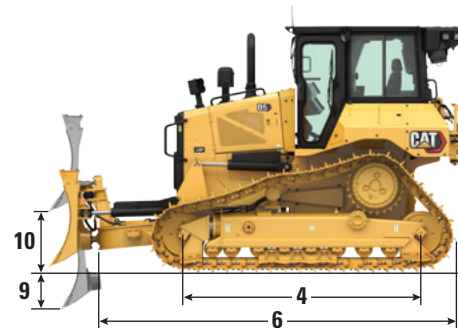
Operating Weight*	19 170 kg	42,263 lb
Shipping Weight**	18 940 kg	41,756 lb
Ground Pressure (ISO 16754)	32.6 kPa	4.7 psi
Undercarriage (Standard)	46 Section/ 8 Bottom Rollers	
1 Track Gauge	2160 mm	85.0 in
2 Width of Track Shoe (Standard)	840 mm	33 in
3 Width of Tractor	3000 mm	118.1 in
4 Length of Track on Ground	3116 mm	122.7 in
Ground Contact Area (ISO 16754)	5.8 m ²	8,995 in ²
Grouser Height (Moderate Service)	57 mm	2.2 in
Ground Clearance	473 mm	18.6 in
5 Machine Height***	3200 mm	126.0 in
6 Length of Basic Tractor	4151 mm	163.4 in

All dimensions above with SystemOne undercarriage with Extreme Service shoes of maximum width for configuration, VPAT blade, and calculated per ISO 16754 unless otherwise specified.

*Operating weight includes blade, lubricants, coolant, full fuel tank, ROPS/FOPS cab, drawbar, and 75 kg (165 lb) operator.

**Shipping weight includes blade lift cylinders, C-frame, lubricants, coolant, 10% fuel, ROPS/FOPS cab, and drawbar.

***Machine height from tip of grouser to top of Product Link Antenna. For sweeps, add 64 mm (2.5 in) to overall machine height. For forestry sweeps, add 81 mm (3.2 in). With Extreme Service, add 9 mm (0.4 in). When Cat GRADE with 3D antennas are installed there is no added machine height.



Blades

Configuration	LGP VPAT		LGP VPAT – Foldable	
Capacity (ISO 9246)	4.0 m ³	5.2 yd ³	4.2 m ³	5.5 yd ³
7 Width across End Bits	4080 mm	13.4 ft	4080 mm	13.4 ft
Width without End Bits	3969 mm	156.3 in	3969 mm	156.3 in
Width across End Bits (Blade Angled 24°)	3736 mm	147.1 in	3736 mm	147.1 in
Width without End Bits (Blade Angled 24°)	3640 mm	143.3 in	3640 mm	143.3 in
Width across End Bits (Blade Angled 33° for transportation purpose only)	—		3000 mm	118.1 in
Maximum Blade Angle	24°		24°	
8 Height	1263 mm	49.7 in	1263 mm	49.7 in
9 Dig Depth	580 mm	22.8 in	580 mm	22.8 in
10 Lift Height	1051 mm	41.4 in	1051 mm	41.4 in
11 Maximum Tilt at Blade Corner	371 mm	14.6 in	371 mm	14.6 in
Maximum Tilt Angle	8.5°		8.5°	
Pitch Adjustment	60° (cutting edge/ground, nominal); -2°/+4°		60° (cutting edge/ground, nominal); -2°/+4°	
12 Length of Machine (Blade Straight)	5350 mm	211 in	5350 mm	211 in
Length of Machine (Blade Angled 24°, without fuel tank guard)	6137 mm	242 in	6027 mm	237 in
VPAT Blade foldable, angled 33° for transportation purpose only	—		6377 mm	251 in
Weight (Blade)	1256 kg	2,769 lb	1526 kg	3,364 lb

D5 Track-Type Tractor Specifications

D5 VPAT Fine Grading

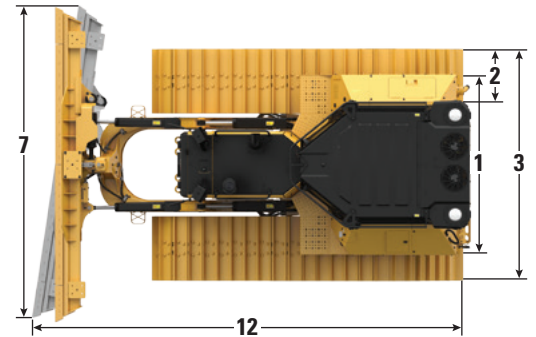
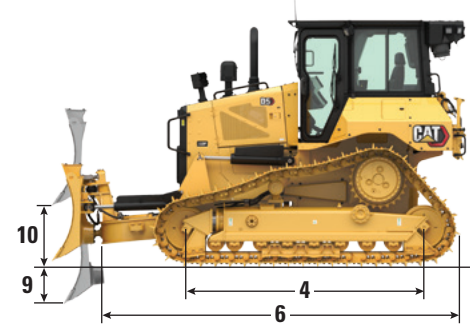
Operating Weight*	17 780 kg	39,198 lb
Shipping Weight**	17 550 kg	38,691 lb
Ground Pressure (ISO 16754)	41.4 kPa	6.0 psi
Undercarriage (Standard)	46 Section/ 8 Bottom Rollers	
1 Track Gauge	1890 mm	74.4 in
2 Width of Track Shoe (Standard)	610 mm	24 in
3 Width of Tractor	2500 mm	98.4 in
4 Length of Track on Ground	3116 mm	122.7 in
Ground Contact Area (ISO 16754)	4.2 m ²	6,525 in ²
Grouser Height (Moderate Service)	57 mm	2.2 in
Ground Clearance	473 mm	18.6 in
5 Machine Height***	3200 mm	126.0 in
6 Length of Basic Tractor	4151 mm	163.4 in

All dimensions above with SystemOne undercarriage with Extreme Service shoes of maximum width for configuration, VPAT blade, and calculated per ISO 16754 unless otherwise specified.

*Operating weight includes blade, lubricants, coolant, full fuel tank, ROPS/FOPS cab, drawbar, and 75 kg (165 lb) operator.

**Shipping weight includes blade lift cylinders, C-frame, lubricants, coolant, 10% fuel, ROPS/FOPS cab, and drawbar.

***Machine height from tip of grouser to top of Product Link Antenna. For sweeps, add 64 mm (2.5 in) to overall machine height. For forestry sweeps, add 81 mm (3.2 in). With Extreme Service, add 9 mm (0.4 in). When Cat GRADE with 3D antennas are installed there is no added machine height.



LGP VPAT Model Shown

Blades

Configuration	VPAT		VPAT – Foldable	
Capacity (ISO 9246)	3.5 m ³	4.6 yd ³	3.5 m ³	4.6 yd ³
7 Width across End Bits	3272 mm	10.7 ft	3272 mm	10.7 ft
Width without End Bits	3159 mm	10.4 ft	3159 mm	10.4 ft
Width across End Bits (Blade Angled 24°)	2998 mm	118.0 in	2558 mm	100.7 in
Width without End Bits (Blade Angled 24°)	2908 mm	114.5 in	2539 mm	97.0 in
Maximum Blade Angle	24°		24°	
8 Height	1261 mm	49.6 in	1261 mm	49.6 in
9 Dig Depth	580 mm	22.8 in	580 mm	22.8 in
10 Lift Height	1051 mm	41.4 in	1051 mm	41.4 in
11 Maximum Tilt at Blade Corner	257 mm	10.1 in	257 mm	10.1 in
Maximum Tilt Angle	8.5°		8.5°	
Pitch Adjustment	60° (cutting edge/ground, nominal); -2°/+4°		60° (cutting edge/ground, nominal); -2°/+4°	
12 Length of Machine (Blade Straight)	5350 mm	211 in	5350 mm	211 in
Length of Machine (Blade Angled 24°, without fuel tank guard)	5969 mm	235 in	5969 mm	235 in
Weight (Blade)	1090 kg	2,403 lb	1286 kg	2,835 lb

D5 Track-Type Tractor Specifications

D5 SU

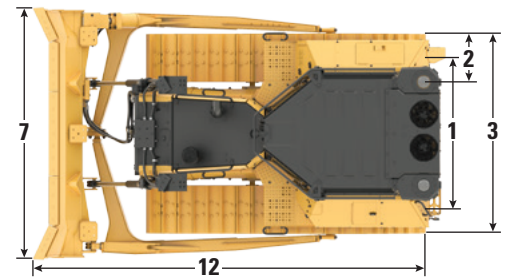
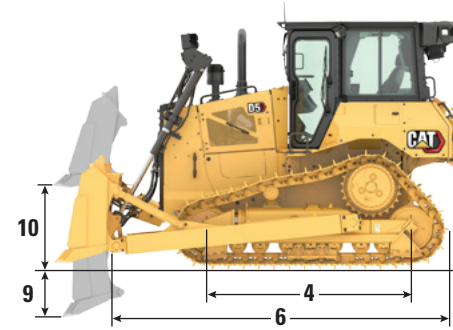
Operating Weight*	17 340 kg	38,228 lb
Shipping Weight**	17 110 kg	37,721 lb
Ground Pressure (ISO 16754)	48.2 kPa	7.0 psi
Undercarriage	40 Section/ 7 Bottom Rollers	
1 Track Gauge	1890 mm	74.4 in
2 Width of Track Shoe (Standard)	610 mm	24 in
3 Width of Tractor (without trunnions)	2500 mm	98.4 in
4 Length of Track on Ground	2562 mm	100.9 in
Ground Contact Area (ISO 16754)	3.5 m ²	5,469 in ²
Grouser Height (Moderate Service)	57 mm	2.5 in
Ground Clearance	358 mm	14.1 in
5 Machine Height***	3085 mm	121.5 in
6 Length of Basic Tractor	3680 mm	144.9 in

All dimensions above with SystemOne undercarriage with Moderate Service shoes of maximum width for configuration, SU blade, and calculated per ISO 16754 unless otherwise specified.

*Operating weight includes blade, lubricants, coolant, full fuel tank, ROPS/FOPS cab, drawbar, and 75 kg (165 lb) operator.

**Shipping weight includes blade lift cylinders, C-frame, lubricants, coolant, 10% fuel, ROPS/FOPS cab, and drawbar.

***Machine height from tip of grouser to top of Product Link Antenna. For sweeps, add 64 mm (2.5 in) to overall machine height. For forestry sweeps, add 81 mm (3.2 in). With Extreme Service, add 9 mm (0.4 in). When Cat GRADE with 3D antennas are installed there is no added machine height.



Blade

Configuration	SU	
Capacity (ISO 9246)	4.3 m ³	5.6 yd ³
7 Width across End Bits	3164 mm	10.4 ft
Width without End Bits	3122 mm	10.2 in
8 Height	1338 mm	52.7 in
9 Dig Depth	544 mm	21.4 in
10 Lift Height	1104 mm	43.4 in
11 Maximum Tilt at Blade Corner	140 mm	5.5 in
Maximum Tilt Angle	8°	
Pitch Adjustment	±5.1°	
12 Length of Machine with SU Blade (without fuel tank guard)	5087 mm	200 in
Blade Weight (blade + push arms installed)	2050 kg	4,520 lb

D5 Track-Type Tractor Specifications

Track Shoes

Some track shoes not available in all regions. Please consult your Cat dealer for details.

Standard			
560 mm (22 in)	Heavy Duty Extended Life (HDXL)	Moderate Service	
560 mm (22 in)	HDXL	Extreme Service	
560 mm (22 in)	HDXL	Extreme Service	Fire Dozer
560 mm (22 in)	SystemOne	Extreme Service	
600 mm (24 in)	HDXL	Moderate Service	
600 mm (24 in)	HDXL	Moderate Service	Fine Grading
600 mm (24 in)	HDXL	Extreme Service	
600 mm (24 in)	HDXL	Extreme Service	Center Hole
610 mm (24 in)	SystemOne	Moderate Service	Fine Grading
610 mm (24 in)	SystemOne	Extreme Service	
610 mm (24 in)	SystemOne	Extreme Service	Center Hole
LGP			
840 mm (33 in)	HDXL	Extreme Service	
840 mm (33 in)	HDXL	Extreme Service	Center Hole
840 mm (33 in)	SystemOne	Moderate Service	
840 mm (33 in)	SystemOne	Extreme Service	
860 mm (34 in)	HDXL	Extreme Service	
860 mm (34 in)	HDXL	Self-Cleaning	
860 mm (34 in)	SystemOne	Extreme Service	
Super LGP (Japan only)			
1070 mm (42 in)	HDXL	Moderate Service	
1070 mm (42 in)	HDXL	Self-Cleaning	

Specialty Dozer Arrangements

	Operating Weight		Shipping Weight		Blade Type	Blade Capacity	
Waste Handler							
VPAT	18 650 kg	41,123 lb	18 420 kg	40,616 lb	VPAT Landfill	6.8 m ³	8.9 yd ³
LGP VPAT	20 680 kg	45,599 lb	20 450 kg	45,092 lb	LGP VPAT Landfill	6.3 m ³	8.2 yd ³
SU	18 860 kg	41,586 lb	18 630 kg	41,079 lb	SU Landfill	7.3 m ³	9.5 yd ³
<ul style="list-style-type: none"> Weights based on full Waste Handler package with rear striker bar/box, waste undercarriage, guarded final drives, center hole track, landfill blade, waste cab and cab air pressurizer. 							
Heavy Duty/Forestry							
D5 VPAT Forestry	18 180 kg	40,087 lb	17 950 kg	39,580 lb	VPAT	6.2 m ³	8.1 yd ³
D5 LGP VPAT Forestry	20 170 kg	44,475 lb	19 940 kg	43,968 lb	LGP VPAT	6.3 m ³	8.2 yd ³
D5 SU Forestry	18 520 kg	40,837 lb	18 920 kg	41,719 lb	SU	4.3 m ³	5.6 yd ³
<ul style="list-style-type: none"> Weights based on Forestry package with drawbar. 							
Fire Suppression Dozer ¹							
VPAT	20 250 kg**	44,644 lb**	19 930 kg**	43,938 lb**	VPAT	6.2 m ^{3*}	8.1 yd ^{3**}
LGP VPAT	21 620 kg**	46,870 lb**	21 300 kg**	46,958 lb**	VPAT	6.3 m ^{3*}	8.2 yd ^{3**}
Super LGP ¹ (Japan only)							
Super LGP	22 250 kg	49,053 lb	22 000 kg	48,502 lb	Straight	2.7 m ³	3.5 yd ³

¹Preliminary specifications. Please check with your Cat dealer for availability.

*Includes brush guard.

**Includes Winch Arrangement.

D5 Track-Type Tractor Specifications

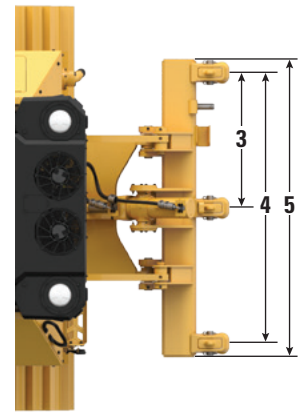
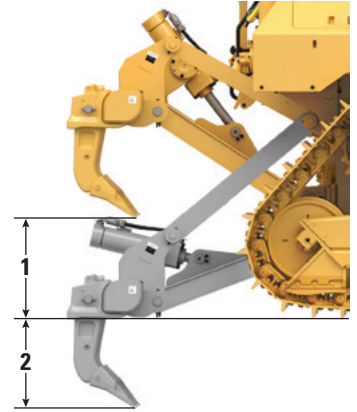
Dimensions – Rear Attachments

Add the following to the total length of the machine when these rear attachments are installed.

D5	Drawbar		Winch		Ripper		Waste Striker Box	
Push Arm and VPAT Dozers	16 mm	0.6 in	446 mm	17.6 in	1060 mm	41.7 in	152 mm	6 in

Ripper

Type	Fixed Parallelogram	
Weight with Three Shanks	1393 kg	3,071 lb
1 Maximum Clearance, Raised (Shank Tip)		
D5 VPAT/Push Arms	404 mm	15.9 in
D5 LGP VPAT	518 mm	20.4 in
2 Maximum Penetration		
Standard	552 mm	21.7 in
LGP	437 mm	17.2 in
3 Pocket Spacing	1000 mm	3 ft 3.4 in
4 Shank Gauge	2 m	6 ft 7 in
Shank Section	73 mm × 176 mm	2.9 in × 6.9 in
Number of Pockets	3	
5 Overall Beam Width	2202 mm	86.7 in
Beam Cross Section	219 mm × 254 mm	8.6 in × 10.0 in
Maximum Penetration Force		
Standard	51.6 kN	11,600 lbf
LGP	43 kN	9,667 lbf
Maximum Pryout Force		
Standard	211.2 kN	47,480 lbf
LGP	170 kN	38,217 lbf



D5 Track-Type Tractor Specifications

Winch

Winch Model	PA55	
Weight*	1277 kg	2,815 lb
Oil Capacity	73 L	19.3 gal
Winch and Bracket Length	1145 mm	45.1 in
Winch Case Width	975 mm	38.4 in
Drum Diameter	254 mm	10 in
Drum Width	315 mm	12.4 in
Flange Diameter	504 mm	19.8 in
Drum Capacity – 22 mm (0.88 in)	88 m	288 ft 9 in
Winch Drive	Mechanical	
Control	Electric	
Overall Width	975 mm	38.4 in
Rope Diameter (recommended)	19 mm	0.75 in
Cable Ferrule Size (O.D. × Length)	54 mm × 67 mm	2.1 in × 2.6 in
Maximum Bare Drum		
Line Pull	31 388 kg*	69,200 lb*
Line Speed	43 m/min	141 ft/min
Maximum Full Drum		
Line Pull	23 359 kg*	54,100 lb*
Line Speed	66 m/min	210 ft/min

*Weight: Includes pump, operator controls, oil, mounting brackets and spacers.

Slow and standard speed winches are available.

D5 Track-Type Tractor Specifications

Standards

ROPS/FOPS

- ROPS (Rollover Protective Structure) offered by Caterpillar for the machine meets ROPS criteria ISO 3471:2008.
- FOPS (Falling Object Protective Structure) meets ISO 3449:2005 Level II.

Brakes

- Brakes meet the standard ISO 10265:2008.

Sound and Vibration – Cab

Sound Level Information

- The declared dynamic operator sound pressure level is 74 dB(A) when “ISO 6396:2008” is used to measure the value for an enclosed cab. The measurement was conducted at 70% of maximum engine cooling fan speed. The sound level may vary at different engine cooling fan speeds. The cab was properly installed and maintained. The measurement was conducted with the cab doors and the cab windows closed.

NOTE: The dynamic operator sound pressure level uncertainty is ± 2 dB(A).

- Hearing protection may be needed when the machine is operated with an open operator station for extended periods or in a noisy environment. Hearing protection may be needed when the machine is operated with a cab that is not properly maintained, or when the doors and windows are open for extended periods or in a noisy environment.
- The guaranteed exterior sound power level is 110 dB(A) when the value is measured according to the dynamic test procedures and the conditions that are specified in “ISO 6395:2008.” The measurement was conducted at 70% of the maximum engine cooling fan speed. The sound level may vary at different engine cooling fan speeds.
- Sound level information for machines in European Union countries and in countries that adopt the “EU directives.” The information below applies to only the machine configurations that have the “CE” mark on the product identification plate. If equipped, the certification label is used to verify the environmental sound certification of the machine to the requirement of the European Union. The value that is listed on the label indicates the guaranteed exterior sound power level (L_{WA}) at the time of manufacture for conditions that are specified in the “2000/14/EC.”

Sustainability – Sound and Vibration Levels

Sound Levels

Guaranteed Exterior Sound Power		
2000/14/EC	ISO 6395:2008	110 dB(A)
Dynamic Operator Sound Pressure Level (L_{pA})		
ISO 6396:2008		74 dB(A)

Vibration Levels

Maximum Hand/Arm*		
ISO 5349:2001		2.5 m/s ²
Maximum Whole Body*		
ISO/TR25398:2006		0.5 m/s ²
Seat Transmissibility Factor		
ISO 7096:2000 – spectral class EM6		<0.7

- Values are for an experienced operator in a dozing application, consult the Operating and Maintenance Manual for further details.

Advanced Cabin Filtration

Operator Cabin

- Distributed HVAC ducting with automatic temperature control and blower speed provides ultimate operator comfort with less user input.
- Reduced maintenance of the condenser core with automatic reversing fans.
- Cat Advanced Cabin Filtration is standard.

Cat Advanced Cabin Filtration

- Operator protection from respirable particulate (0.3-10-micron size).
- Sustainably pressurized cab (U.S. Silica compliant).
- Reduced maintenance with longer life, high efficiency filters.
- Protection for all cabin components: electronics, etc.
- Helps meet U.S. Occupational Safety and Health Administration Silica Rule Table 1 requirements for operator cabs.
- Multi-tiered filter offerings for optional efficiency upgrades. Contact Cat dealer for availability.
 - MERV 16 – Standard Equipment
 - HEPA
 - Activated Carbon + HEPA
 - ABEK1 + HEPA

Waste Handling Package

Waste Handling package provides added features to help protect the machine and operator in harsh waste applications.

Required/Recommended Waste Handler Features:

- Heavy duty guarding package with heavy duty bottom guards and fuel tank guard
- 12 premium guarded LED lights
- Guarded final drive
- Reversing fan
- Trash resistant radiator for high debris applications (six fins/inch)
- High debris cab
- Cab air precleaner
- Fuel tank cover guard
- Waste Undercarriage:
 - Heavy Duty Extended Life (HDXL) undercarriage includes Kevlar® guarded, sealed idlers to help prevent debris such as wire, string or plastic bags from wrapping into seals
 - Has alternating Single Flange and Double Flange track rollers
 - Track bushings can be turned and re-sealed mid-life
 - Press-fit bushings and PPR2 pin retention are particularly well suited for impact applications such as forestry, waste, rock, or V-ditching
 - Center Guides recommended
- Turbine precleaner with screen
- Center hole track
- Rear box with striker bar
- Quick access cab floor provides tool-less access to the floor plate opening

Landfill Blades

Equipped with a trash rack to increase productive capacity when machine works in lighter material such as waste.

- VPAT Waste Blade 2992 mm (118 in) wide, 6.2 m³ (8.1 yd³) capacity
- LGP VPAT Waste Blade 3788 mm (149 in) wide, 6.3 m³ (8.2 yd³) capacity
- SU Landfill Blade 3072 mm (121 in) wide, 4.3 m³ (5.6 yd³) capacity

Forestry/Heavy Duty Package

Forestry package can be ordered with added components to help protect the machine and operator in land clearing and other tough applications.

Required/Recommended Forestry Features:

- Roof top sweeps
- Side and rear hinged screen
- Heavy duty guarding package with heavy duty bottom guards and fuel tank guard
- 12 premium guarded LED lights
- Heavy duty cab with features of the premium cab plus poly-carbonate glass doors for added impact resistance
- Fuel tank cover guard
- Turbine precleaner with screen
- Heavy Duty Extended Life (HDXL) undercarriage with Duralink™:
 - For use in all applications
 - Track bushings can be turned and re-sealed mid-life
 - Press-fit bushings and PPR2 pin retention are particularly well suited for impact applications such as forestry, waste, rock, or V-ditching

D5 Special Arrangements

Fire Suppression Dozer

Outfitted with guarding against fire and heat, specialized operator safety features and added machine protection for forest fire fighting and prevention.

Included/Optional Fire Dozer Features:

- All modifications included in the heavy duty guarding package (excluding front sweeps)
 - Rear sweeps
 - Heavy duty fenders, battery box, enclosure and fuel tank guard
 - Muffler extension flush with sweeps top plate
- All hydraulic and harnesses fire resistant wrapped
- Fuel, A/C, air, DEF lines heat insulated
- Emergency fuel shut-off commanded inside the cab
- Quick access door on cab floor
- All heavy duty bottom guards (16 mm/0.6" thick)
- Front towing eye
- All windows sealed
- Silicone sealing between cab and sheet metal
- Dual control winch/ripper
- 4 × 4,200 lumens heat resistant lights (body and lens), plus insulated harness and switch provisions to add 12 lights (for customer customization)
- Hydraulic reversing fan
- Special engine arrangement for emergency vehicles (U.S. only) compliant with 40 CFR 89-908 (overheat protection and DEF level check deactivated permanently)
- Additional 8 × 4,200 lumens heat resistant lights (body and lens)
- Brush guard blade equipped with blade to hardnose cables protecting C-frame lines
- All windows tempered or laminated – front windshield laminated
- Cab air enhanced filtration:
 - Turbine precleaner plus HEPA filter (particles <0.3 μm) plus Carbon filter
- Fire resistant EcoSafe® oil
- XtraRear undercarriage (43 shoes) with one roller added at back for increased stability on steep slopes
- Built in fire suppression ready system (Supplied: water tank, pump and hose; Not supplied: belly guard sprinkling system)
- Screen package to cover the front windshield and the cab doors

Standard and Optional Equipment

Standard and optional equipment may vary. Consult your Cat dealer for details.

	Standard	Optional		Standard	Optional
POWER TRAIN			OPERATOR ENVIRONMENT		
Cat C7.1 diesel engine	✓		Fully redesigned cab, sound suppressed, with Integrated Roll Over Protective Structure (IROPS), screen ready	✓	
Fully-automatic 3-speed transmission:	✓		Full-color 10-inch (254 mm) liquid crystal touchscreen display	✓	
– Automatic directional and downshift			Integrated rearview camera	✓	
– Controlled throttle, load compensated			In-display key machine features	✓	
– Infinite ground speed adjustment			Application Profile	✓	
– Programmable/selectable bi-directional shifting			Operator ID/Operator ID with Security	✓	
Air-to-air aftercooler (ATAAC)	✓		Premium cab with adjustable armrests		✓
Aluminum bar plate radiator	✓		Cloth seat	✓	
Automatic glowplugs	✓		Deluxe leather heated/ventilated seat		✓
Differential steering	✓		Electrohydraulic implement and steering controls	✓	
Engine air precleaner	✓		Joystick control – Standard or ARO		✓
Engine air precleaner with turbine/screen		✓	Fresh air filter	✓	
Engine idle shutdown	✓		Powered precleaner		✓
Enhanced Power Train Control:	✓		Cab mounted modular Heating/Ventilation/Air Conditioning (HVAC) system	✓	
– Hill Decent Control			Rearview mirror	✓	
– Hill Hold			Retractable 76 mm (3 in) seatbelt	✓	
– Decel Brake Pedal			Communication radio ready	✓	
– Steering Radius Control			Radio, AM/FM/Aux/USB/Bluetooth®		✓
Extended life coolant	✓		Added storage areas	✓	
Ether starting aid		✓	Cup holders	✓	
Final Drives – Arctic, Waste, Super LGP or Fire Dozer		✓	Dash foot pads	✓	
Final Drives – Standard or LGP	✓		Glove box	✓	
Fuel priming pump	✓		Lunchbox storage	✓	
Fuel water separator	✓		Wipers	✓	
Hydraulic demand fan	✓		High Debris/Waste cab with impact resistant polycarbonate doors, solid side windows		✓
Hydraulic reversing fan		✓	Heavy Duty/Forestry cab with impact resistant polycarbonate doors, sliding side windows		✓
Sound suppression (EU only)		✓	Fire Dozer cab with sealed and tempered doors/windows, solid side windows, air filter restriction gauge, fan controls, additional switches		✓
Trash Resistant Radiator Cores		✓			
CAT TECHNOLOGY					
Slope Indicate	✓				
ARO with Slope Assist		✓			
Updated Cat GRADE with 3D		✓			
Full-color 10-inch (254 mm) touchscreen grade display		✓			
AutoCarry™ (included in Cat GRADE with 3D)		✓			
Updated Stable Blade (included in ARO with Assist)		✓			
Traction Control (included in Cat GRADE with 3D)		✓			
Blade Load Monitor (included in Cat GRADE with 3D)		✓			
Product Link, Cellular PLE641	✓				
Product Link Elite PLE783 – Dual Cellular/Satellite		✓			

(continued on next page)

D5 Standard and Optional Equipment

Standard and Optional Equipment *(continued)*

Standard and optional equipment may vary. Consult your Cat dealer for details.

	Standard	Optional		Standard	Optional
UNDERCARRIAGE			BULLDOZERS		
Standard or Low Ground Pressure (LGP) undercarriage	✓		VPAT dozer package		✓
Super LGP (Japan only)		✓	SU dozer package		✓
Heavy Duty (HDXL with DuraLink) or SystemOne undercarriage	✓		BLADES		
Fine grading undercarriage		✓	VPAT		✓
Waste, fire dozer undercarriage		✓	Semi-Universal		✓
Carrier rollers	✓		Foldable VPAT		✓
Hydraulic track adjusters	✓		Waste/Landfill		✓
Lifetime lubricated track and rollers	✓		Fire Dozer		✓
Moderate service track shoes (see chart on page 7)	✓		HYDRAULICS		
Extreme service track shoes (see chart on page 7)		✓	Load sensing hydraulics	✓	
Redesigned track roller frame	✓		Independent steering and implement pumps	✓	
Track roller frame guiding guards: center, partial or full (NOTE: center guiding guards standard on LGP machine)		✓	ELECTRICAL		
			Lights – 6 LED	✓	
			Premium lights – 12 LED		✓
			Backup alarm	✓	
			Beacon warning light		✓
			Converter: two 10 Amp, 12V outlets	✓	
			Forward warning horn	✓	

(continued on next page)

Standard and Optional Equipment (continued)

Standard and optional equipment may vary. Consult your Cat dealer for details.

	Standard	Optional		Standard	Optional
SERVICE AND MAINTENANCE			ATTACHMENTS		
30-minute cab removal	✓		Ripper-ready rear hydraulics		✓
Adjustable pitch link (VPAT)	✓		Dual ripper/winch control		✓
Centralized, remote mounted pressure taps	✓		Ripper with straight or curved shanks		✓
Ecology drains	✓		Winch:		✓
Extended service intervals (500 hours engine, 1,000 hours power train)	✓		– PACCAR PA55, low speed PTO		
Fast fuel fill		✓	– PACCAR PA55, standard speed PTO		
Ground level service center (remote electrical disconnect, secondary shutdown switch, hour meter)	✓		– Fairlead Assembly; 3-roller, fits PA55 winches		
High-speed oil change		✓	– Retrofit kit (4th roller); fits PA55 winches		
Heavy duty perforated radiator doors, louvered and hinged	✓		Drawbar		✓
Rear access ladder	✓		Heavy Duty/Forestry, High Debris/Waste, Fire Dozer special arrangements		✓
Refilling fuel pump (EU only)		✓	Open sweeps package		✓
Removable engine enclosures, perforated and hinged	✓		Rear striker box with striker bar		✓
S-O-S SM sampling ports	✓		GUARDING AND SCREENS		
Shovel holder	✓		Bottom guards – standard or heavy duty		✓
Under hood work light		✓	Fuel tank guards		✓
BATTERIES, STARTERS, ALTERNATORS AND COOLANT			Grab handles	✓	
95 Amp alternator	✓		Guards for premium lights, front and side		✓
24 Volt starter	✓		Side and rear screens		✓
Arctic engine coolant, – 51° C (–60° F)		✓			
Engine coolant, – 37° C (–35° F)	✓				
Cold Weather package: heavy duty battery, heavy duty starter, ether starting aid, jacket water heater		✓			
Two maintenance free 12-volt batteries (950 cca) (24-volt system)	✓				



オフロード法2014年
基準適合

For more complete information on Cat products, dealer services, and industry solutions, visit us on the web at www.cat.com

© 2019 Caterpillar
All rights reserved

Materials and specifications are subject to change without notice. Featured machines in photos may include additional equipment. See your Cat dealer for available options.

CAT, CATERPILLAR, LET'S DO THE WORK, their respective logos, "Caterpillar Yellow," the "Power Edge" and Cat "Modern Hex" trade dress as well as corporate and product identity used herein, are trademarks of Caterpillar and may not be used without permission.

AEXQ2535 (06-2019)
Build Number: 17A
(ANZ, EU, NAm, Japan,
Korea, Turkey)

